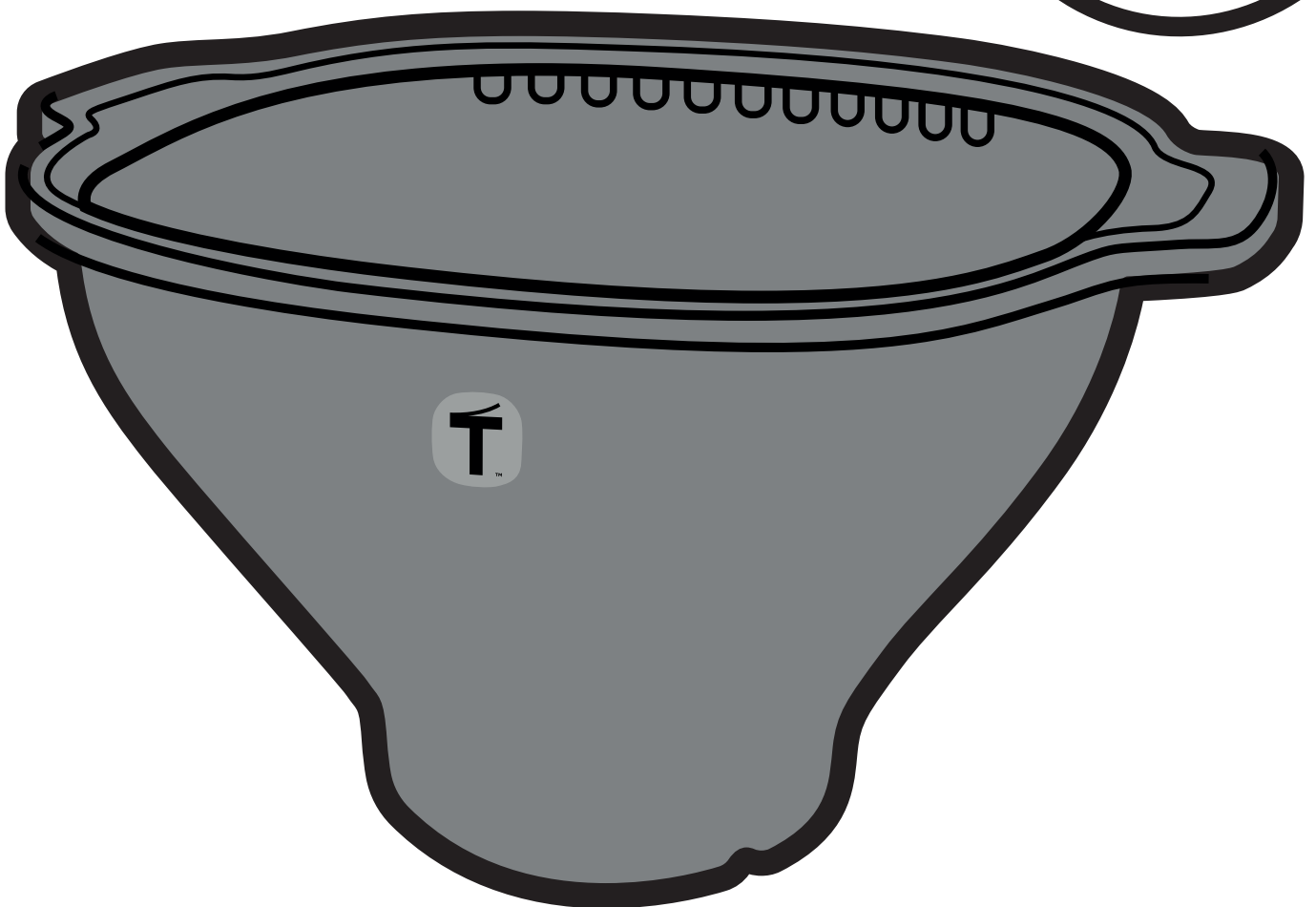
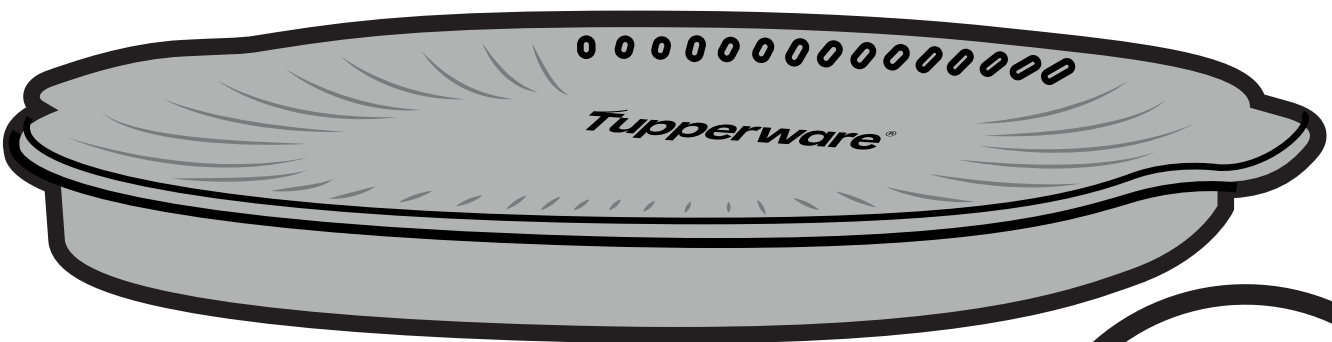
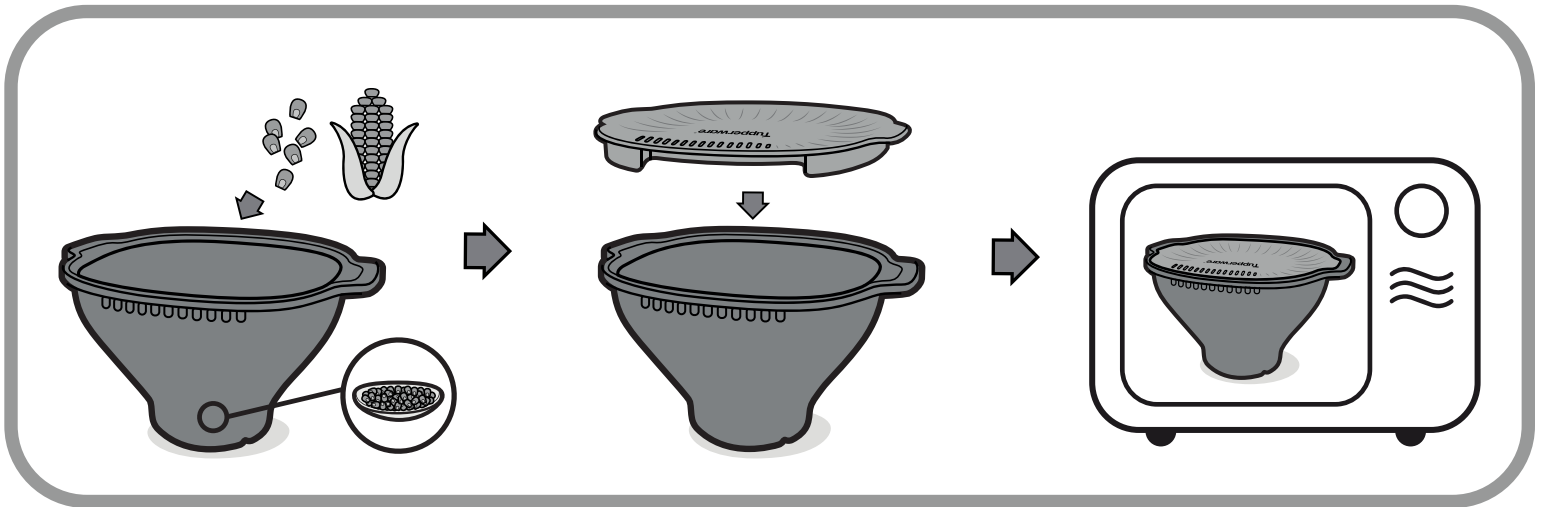
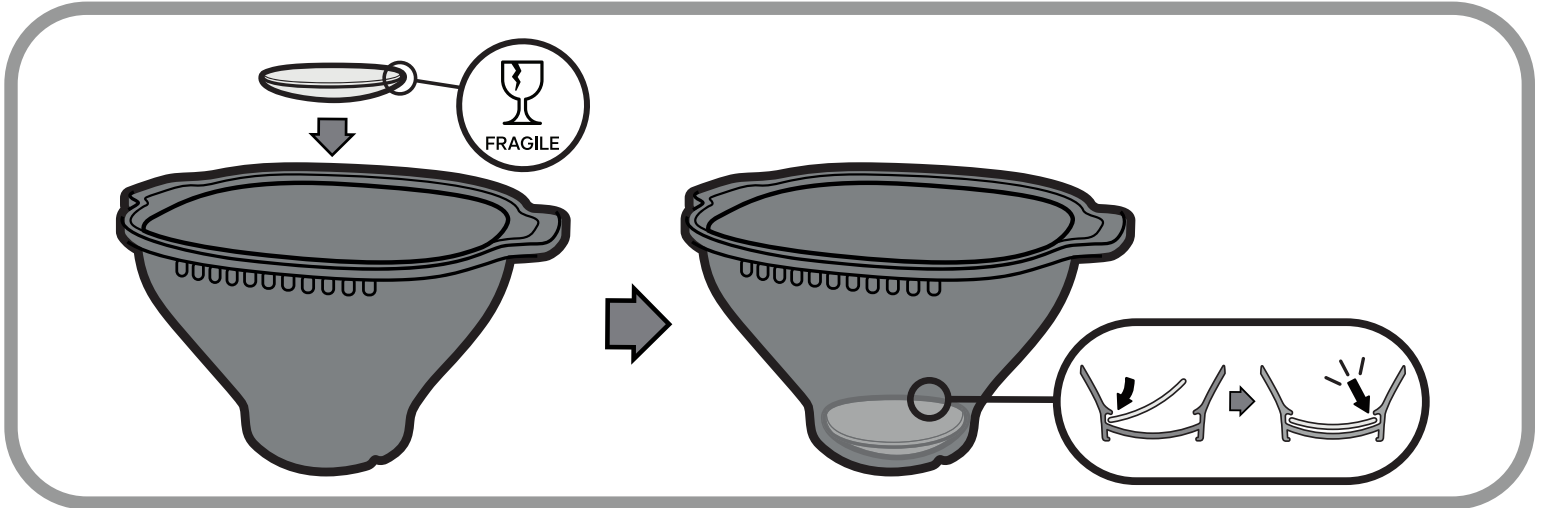
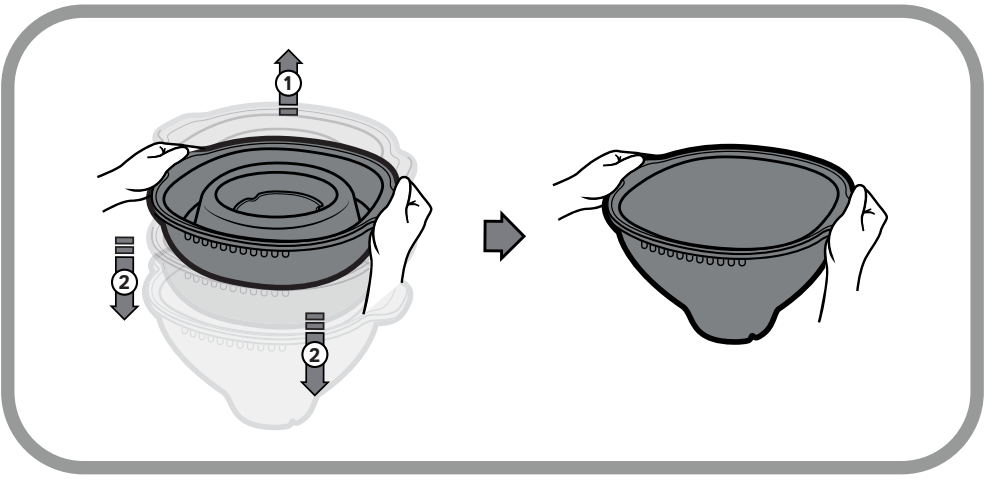
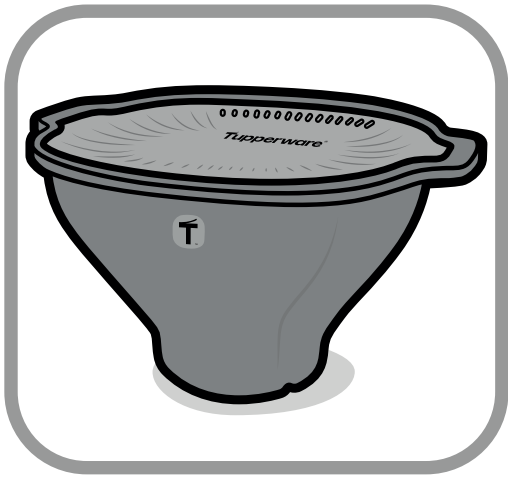


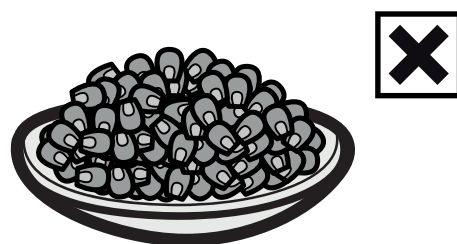
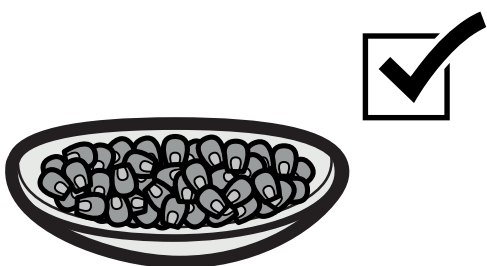
Tupperware WOW POP

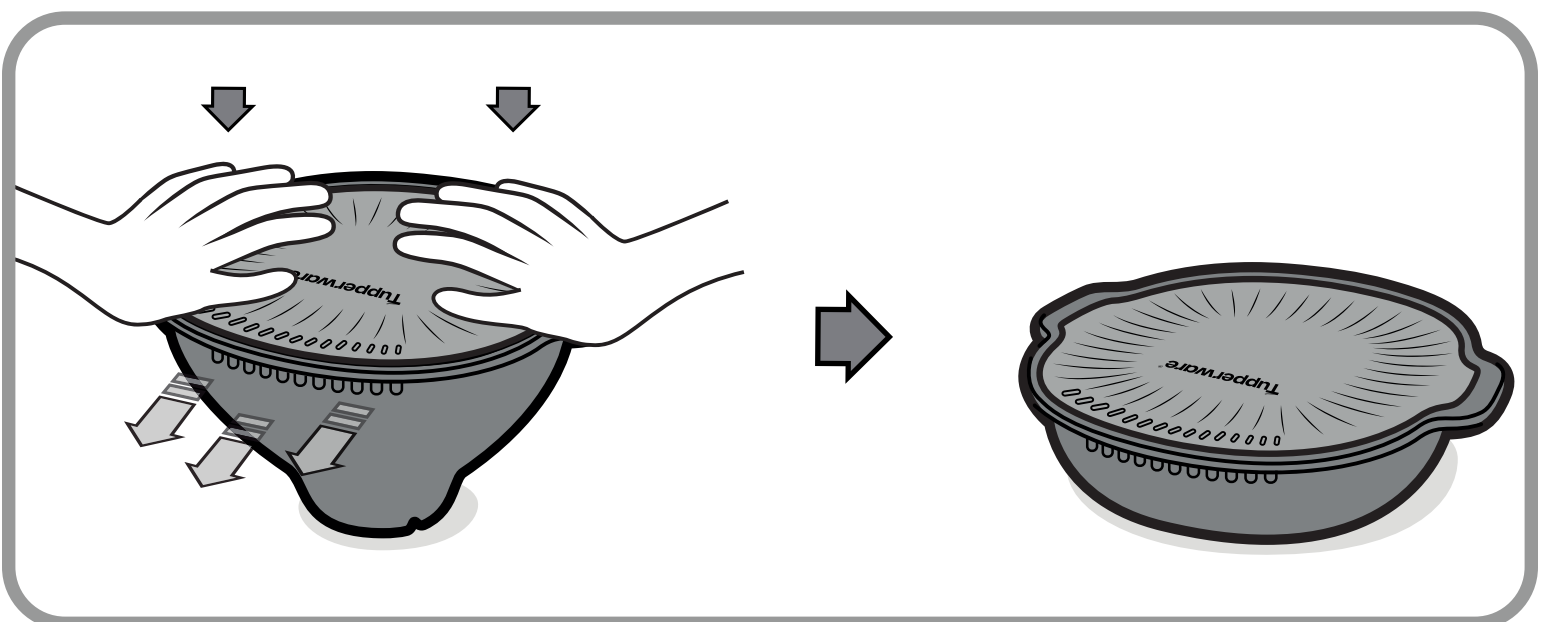
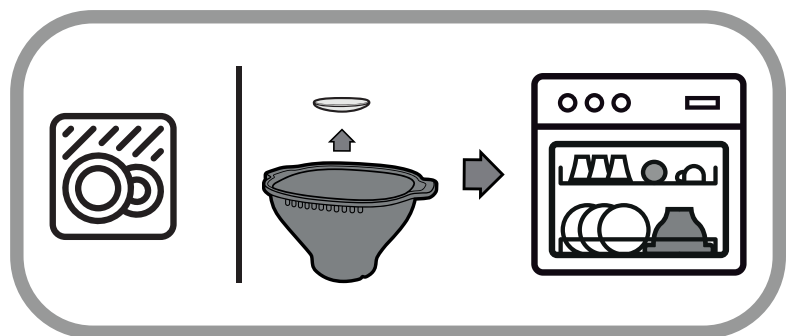
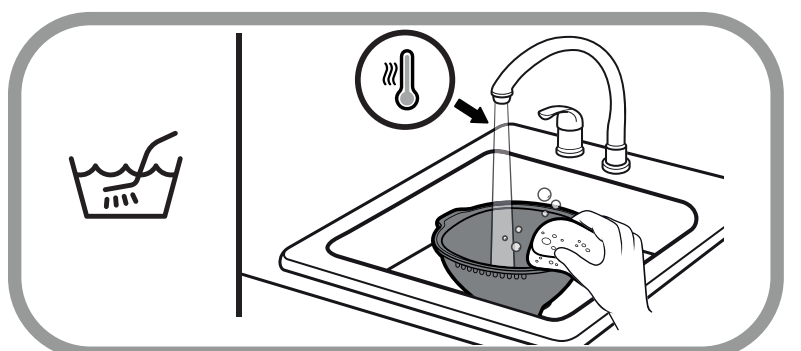
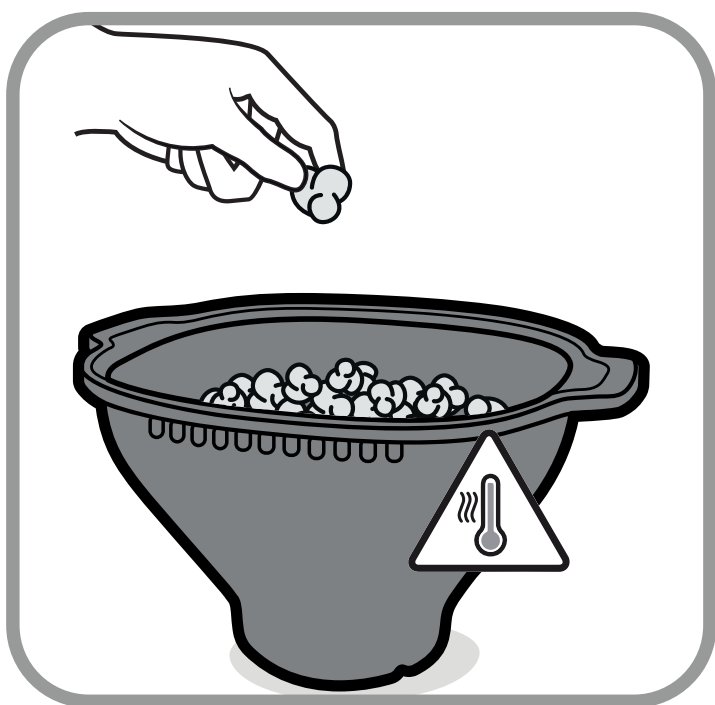
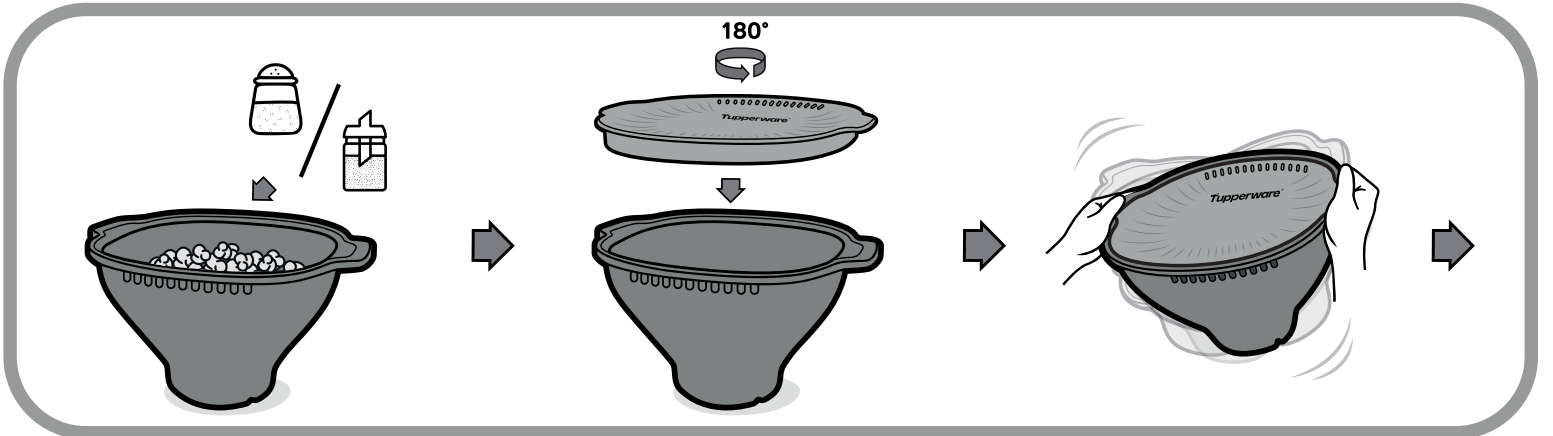
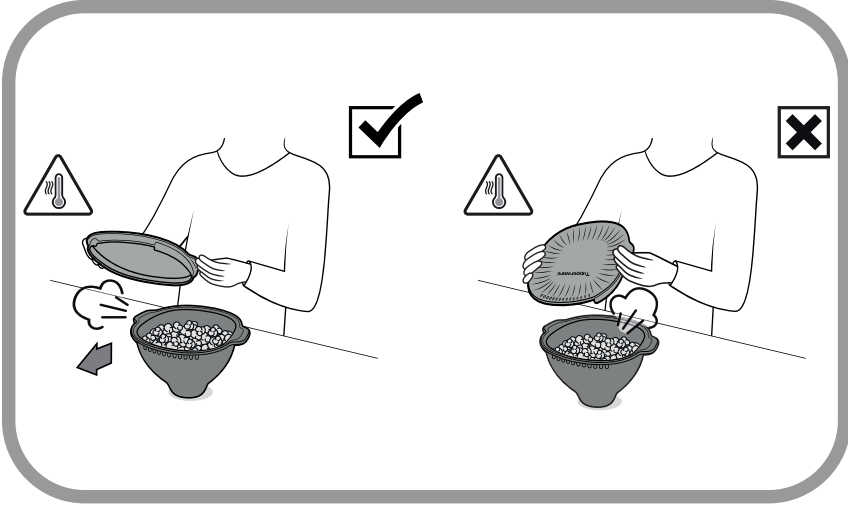
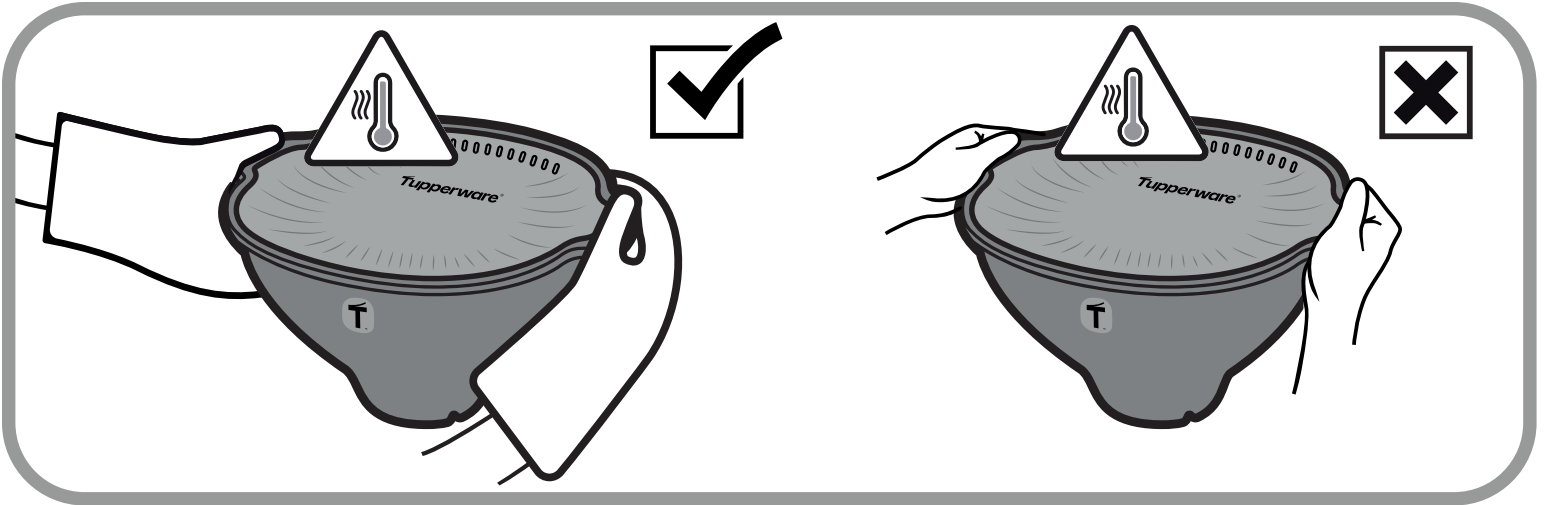
Microwave Popcorn Maker





2 tbsp - 30g	
1/4 cup - 54g	
1/3 cup - 67g	
MAX 6 tbsp - 72g	
1 tbsp = 15ml	





WOW POP Microwave Popcorn Maker

Congratulations on your selection of the Tupperware WOW POP Microwave Popcorn Maker. With its ingenious design and simple functionality popping has never been this enjoyable!



Refer to the drawings on page 2 for the detailed usage instructions.

Important safeguards

1. Adult supervision required.
2. Never leave microwave unattended when in use.
3. Do not add more kernels than the maximum amount recommended.
4. Unpopped kernels should never be recooked. Recooking unpopped kernels can lead to burned popcorn and potential damage to the product.
5. Do not use the microwave popcorn function, as this functions only for pre-packaged microwave popcorn bags.
6. Popping may take more or less time depending on the type of microwave being used. Some microwave ovens need more time to pop the kernels. You have to adjust the cooking time according to your microwave after first trial.
7. For the first use, it is recommended to pop kernels without seasoning. To start, set the microwave timer to 3 minutes. Listen carefully to the sound of the popping kernels. Once they reduce in frequency and the interval between popping is about 2 seconds, stop the microwave. If required, adjust the time for the next batch of kernels.
8. If you believe there are too many uncooked kernels left in the bowl after your first popped batch, add 15 to 30 seconds to your next batch.
9. Different microwaves have different performance. Tupperware's testing is based on "High" setting on the microwave with a max of 1000 wattage.
10. When using a specific Tupperware recipe, make sure to follow the recipe instructions carefully, as timings will vary from raw popcorn kernels.
11. Open the popcorn maker right after use to ensure the popcorn stays crunchy.
12. Shake out most of the unpopped kernels using the kernel colander.
13. Sides and bottom may be hot, use care when placing the popcorn maker on your lap.
14. Let the product cool down completely before cleaning – glass tray is very hot right after use!
15. Collapse the product before transporting for storage (in case the product falls on the floor, the risk of breakage of the glass is much smaller in the collapsed position).
16. If glass is damaged/broken, discard the product, do not use your product any longer and contact Tupperware to purchase a replacement product.
17. On the inner surface of the cover, small white spots could develop in time. These do not impact the performance of the popcorn maker, nor alter the material. These white spots are considered normal for this application and are not covered by warranty.

The Tupperware Commitment

Our products reflect our commitment to making a measurable impact on the world around us. At Tupperware, we design all products with minimizing plastic and food waste in mind. By creating quality, durable and reusable products made to stand the test of time, we're supporting our mission to reduce waste for the longevity of our planet, our people and the communities in which we live and work.

Tupperware WOW POP Microwave Popcorn Maker is covered by a Tupperware warranty against any material or manufacturing defects that may occur when using the product according to directions and in normal household use.

The warranty does not include damage to the product resulting from negligent use or misuse which may include overheating, stains and scratches on the inside and outside, or any nicks it may have received or if it has been dropped.

If your product is covered by warranty, please refer to the warranty terms applicable to your country for a full description of coverage.

Your Tupperware product is meant to be used again and again. If for any reason your product is damaged and not covered by warranty or you no longer need your product, please be responsible and recycle it, or let us know if we can help you.

www.tupperware.eu